

DAMAI

r e s i d e n c e





Shopping Mall at Suria KLCC



Ampang Park LRT Station



The Intermark

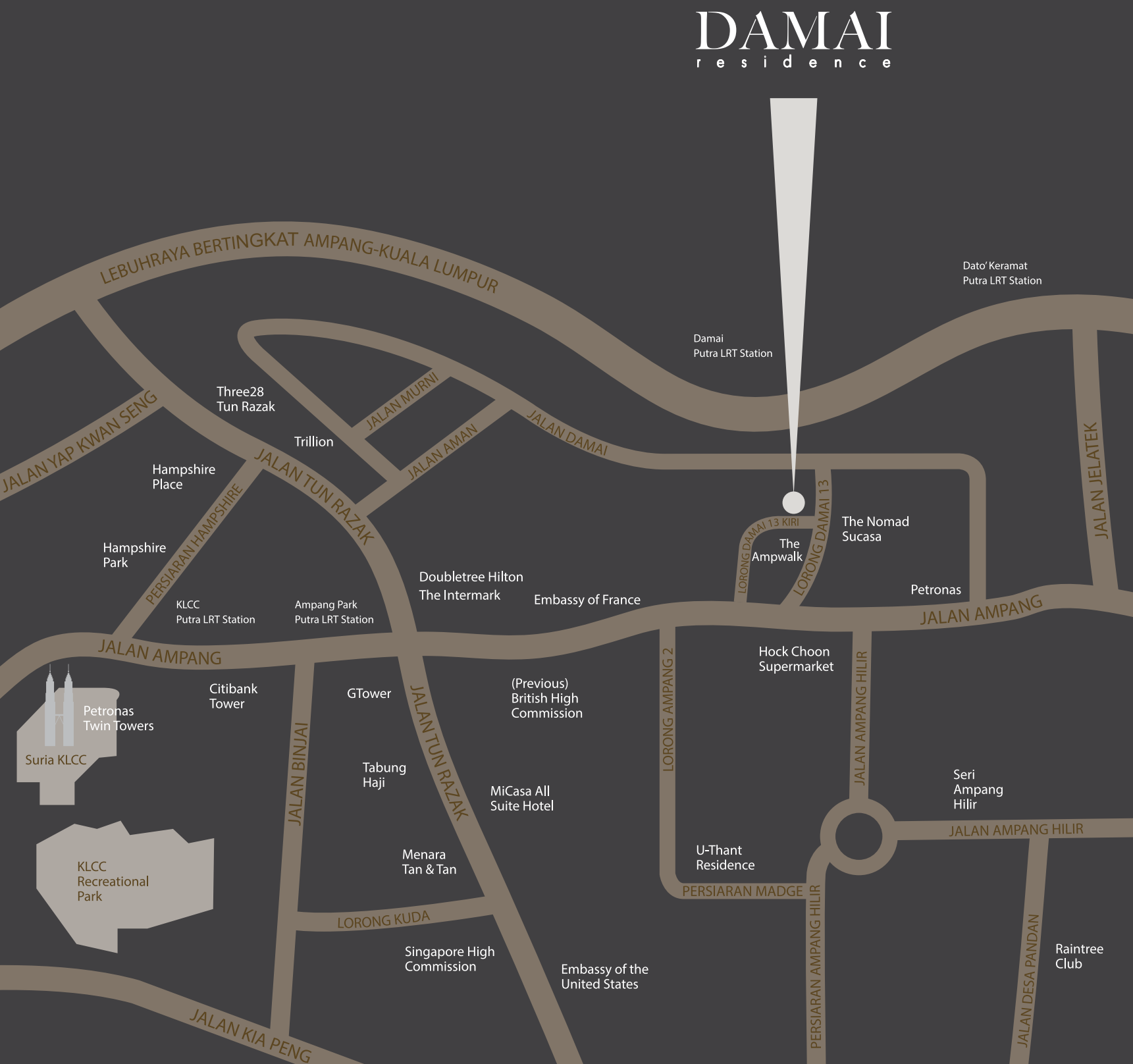


Hock Choon Supermarket



Indoor Tennis Courts at The Raintree Club

Direct access to Jalan Ampang and Jalan Tun Razak
 Philharmonic and Art Galleries
 Royal Selangor Golf Club
 Gleneagles Medical Centre and Prince Court Medical Centre
 A bountiful choice of Restaurants, Bars and Cafes



1st floor plan of the Damai 13 Kiri building. The plan shows a long corridor at the top with 10 visitor rooms (VISITOR 1-10). Below this is a central area with a staircase, a management office, a lift lobby, and several meeting rooms (M&E). A drop-off point is marked near the staircase. The bottom section of the plan shows the entrance, a reception area (RECE), a waiting area (WAIT), a meeting room (M&E), a training room (TRN), and a refuse room. The building is situated on Lorong Damai 13 Kiri.

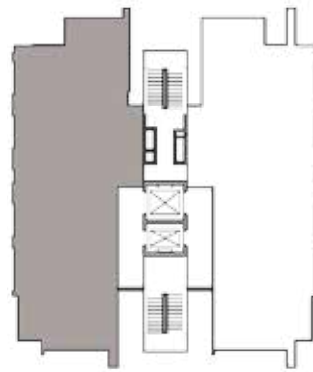
FLOOR PLANS

TYPE A1

Level: 3A, 5, 8, 9, 12, 13, 16, 17
Built-up Area: 180 sq m / 1938 sq ft

TYPE A3

Level: 6, 7, 10, 11, 14, 15, 18
Built-up Area: 180 sq m / 1938 sq ft



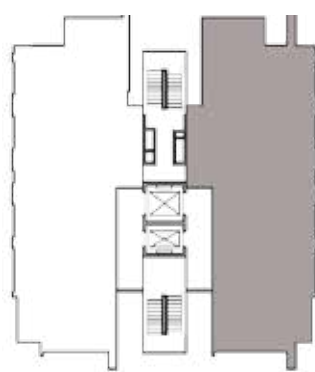
Type A1, A3

TYPE A2

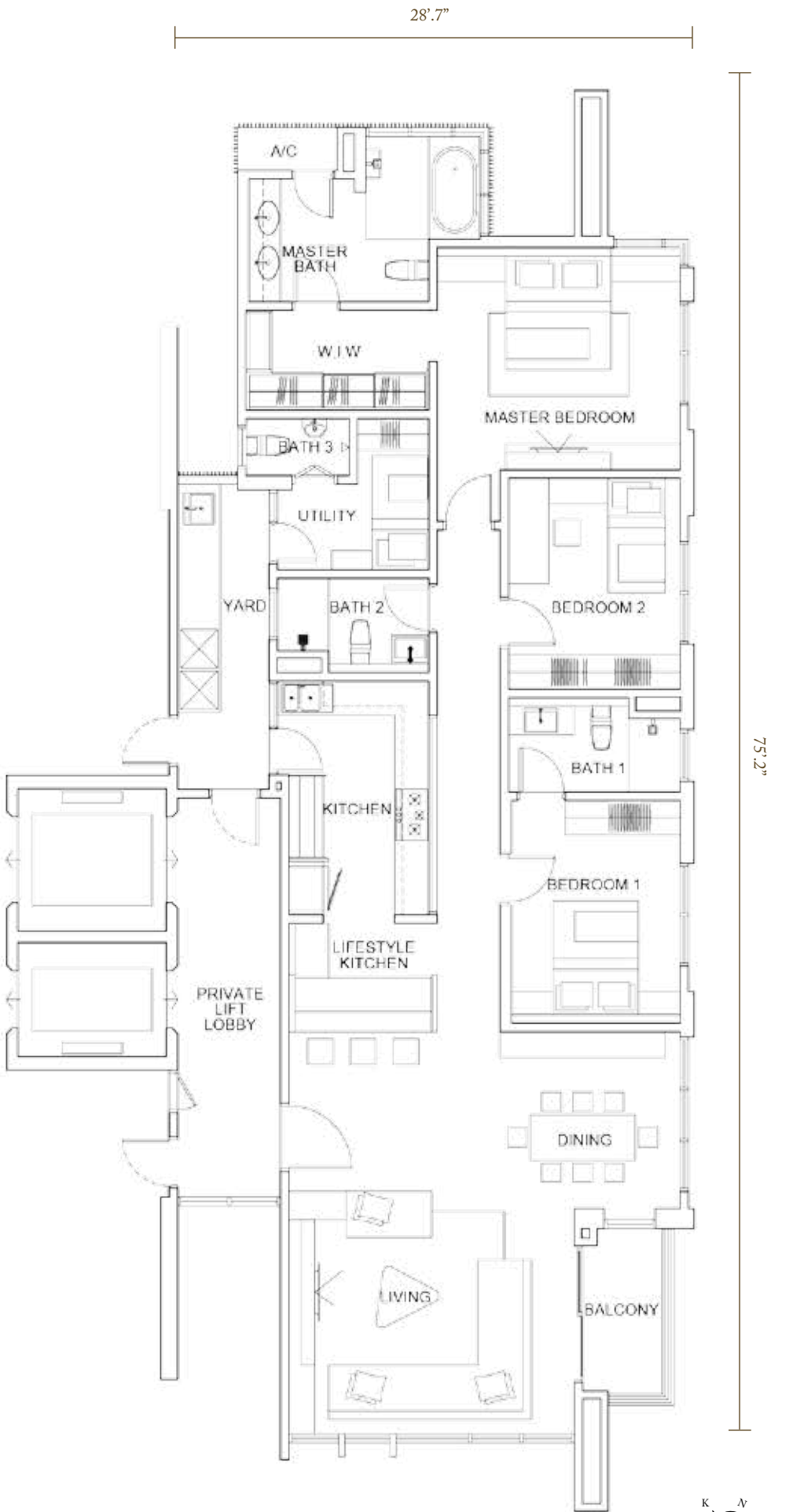
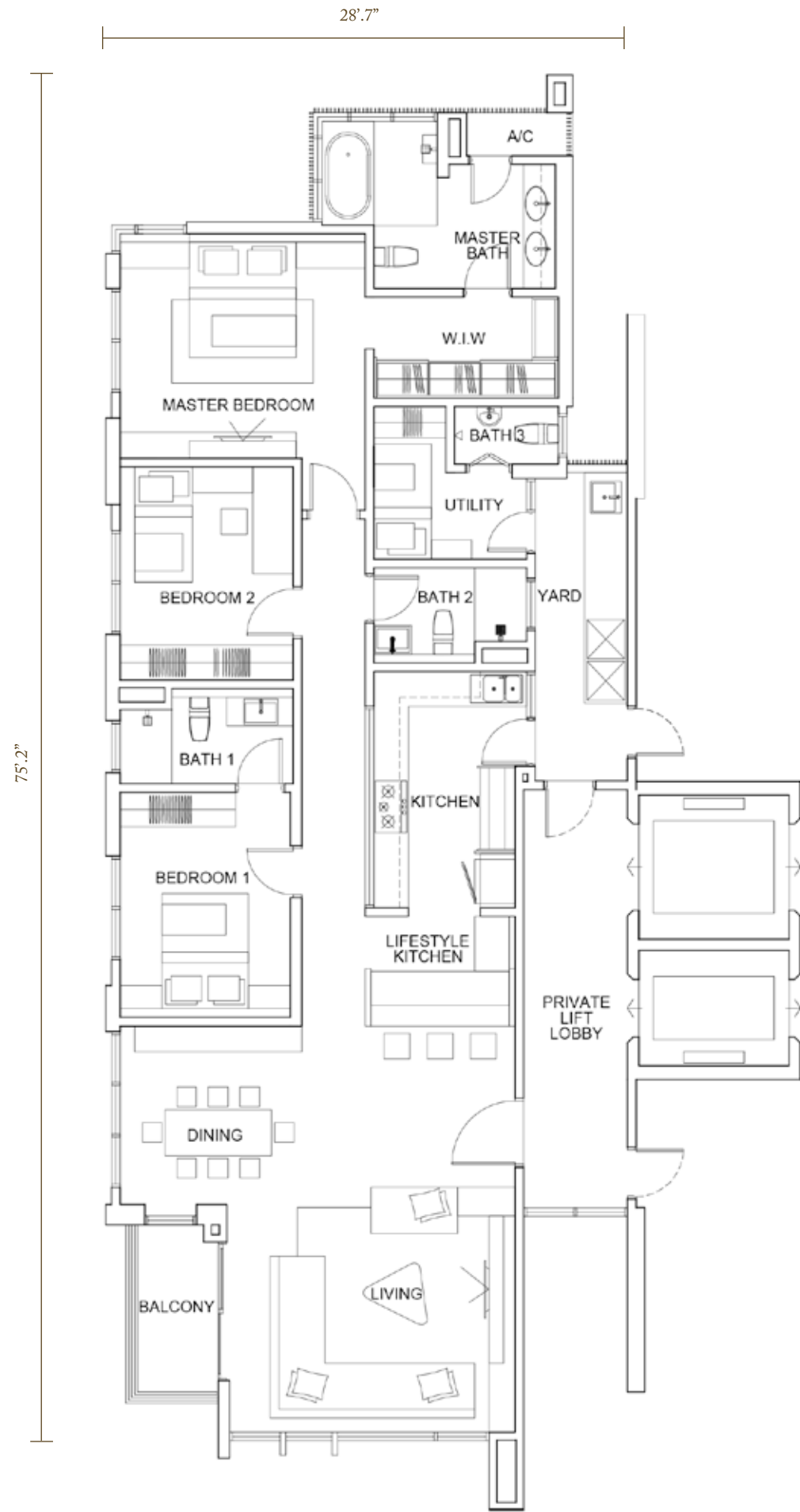
Level: 3A, 5, 8, 9, 12, 13, 16, 17
Built-up Area: 180 sq m / 1938 sq ft

TYPE A4

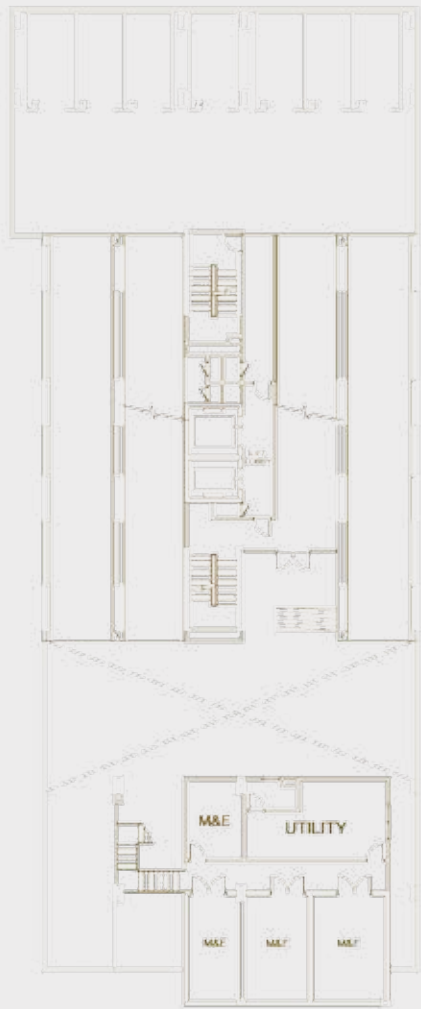
Level: 6, 7, 10, 11, 14, 15, 18
Built-up Area: 180 sq m / 1938 sq ft



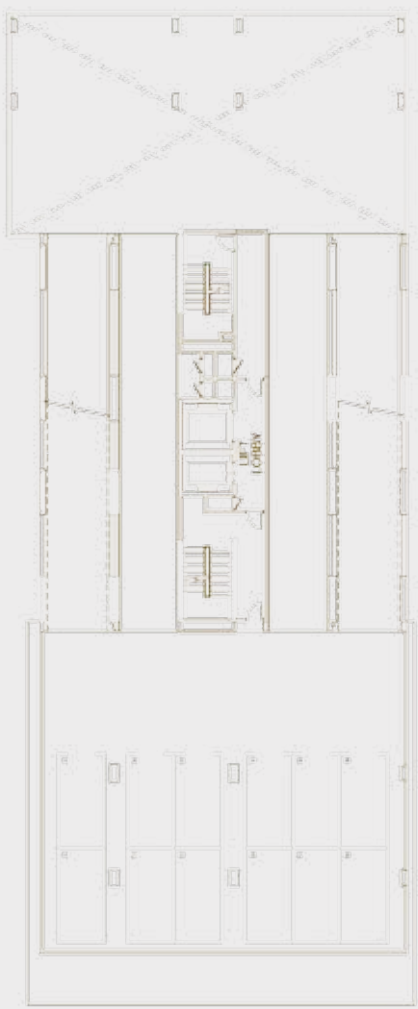
Type A2, A4



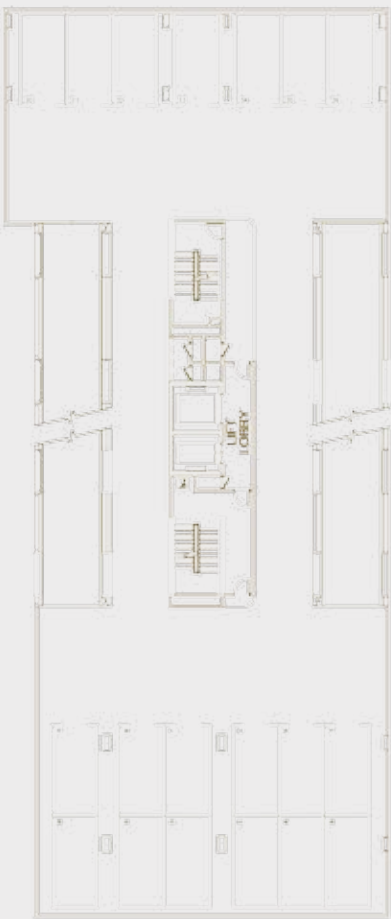
CARPARK
FLOOR PLANS



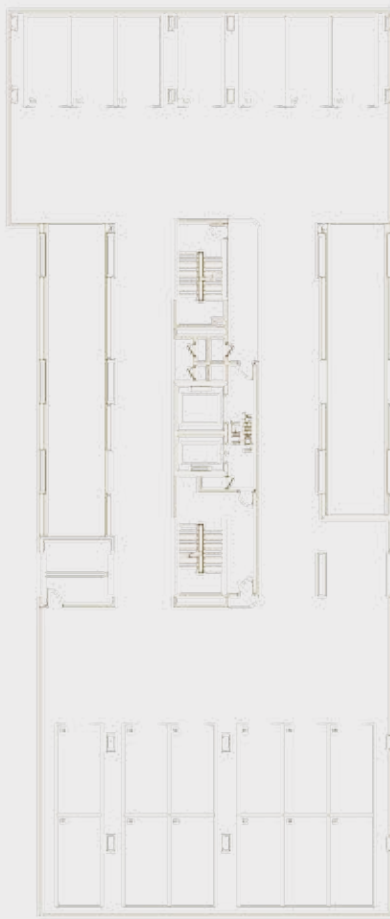
P1
CARPARK &
UTILITY



P1A
CARPARK



P2
CARPARK



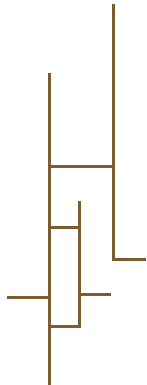
P3
CARPARK



Artist's Impression

SPECIFICATIONS

Structure:	Reinforced Concrete	
Walls:	Brick wall with Plaster / Reinforced Concrete Wall / Dry Wall	
Roof:	Reinforced Concrete Flat Roof	
Ceiling Finishes:	Skim Coat Finished with Emulsion Paint and Plaster Ceiling to Selected Ceiling	
Windows:	Aluminum Frame Fixed Glass / Top Hung	
Ironmongeries:	Quality Locksets	
Doors	Main Entrance	Timber Fire Rated Door
	Bedroom / Bathroom	Plywood Flush Door
	Others	Aluminum Sliding Door
		Folding Door
Wall Finishes:	Internal	Skim Coat & Paint / Plaster & Paint
	Kitchen	Plaster and Paint / Ceramic Tiles / Glass
	Bathrooms	Homogenous Tiles / Ceramic Tiles / Porcelain Tiles
	Others	Plaster and Paint
Floor Finishes	Foyer, Living , Dining	Homogenous Tiles / Porcelain Tiles
	Bedrooms	Timber Flooring
	Bathroom, Balcony	Homogenous Tiles / Porcelain Tiles
	Kitchen, Yard	Homogenous Tiles / Ceramic Tiles / Porcelain Tiles
	Air-Con Ledge	Cement Render
Fitting-Outs:	Kitchen	Kitchen Cabinet, Hood, Hob & Oven
	Bathroom	Storage Water Heater
	Bedrooms	Built-in Wardrobe
Air-Conditioning System	Bedrooms, Living, Dining	Air-Conditioner unit
Sanitary and Plumbing Fittings:		
Long Bath with Mixer		1
Hand Shower with Mixer		3
Wash Basin with Tap		5
Water Closet		4
Shower Point & Shower Rose		1
Kitchen Sink with Tap		1
Electrical Installation:		
Power Supply		3 Ph
Lighting Point		34
Fan Point		4
Power Point (13A)		41
Water Heater Point		3
Data Point		4
Door Bell Point		1
SMATV Point		4
Intercom		1
Fibre Wall Point		1



PROJECT SUMMARY

- Land Area

:

2080.681 m² (0.514 acres)
- Land Title

:

Condominium
- Land Tenure

:

Freehold
- Development

:

1 Block, 20 Stories, 31 Units
- (The typical floor includes only two units, each with its own private lobby. The penthouse occupies the entire floor)*
- Facilities / Services

:

Exercise Facilities, Management Office and Security Services

TYPE <i>west/east</i>	BUILT-UP <i>m²/sq ft</i>	BEDROOM(S)
A1 - <i>west</i>	180 / 1938	3 + 1
A2 - <i>east</i>	180 / 1938	3 + 1
A3 - <i>west</i>	180 / 1938	3 + 1
A4 - <i>east</i>	180 / 1938	3 + 1
B	368 / 3961	6 + 1
<i>* (please request for the floor plan if you are interested in our penthouse)</i>		

Car Park: 1 Ground floor + 3 Elevated Levels

Expected Completion Date: December 2017

Developed By:



Marketing & Sales Headquarters

Suite 5.02, Level 5, The Gardens South Tower,
Mid Valley City, Lingkaran Syed Putra,
59200 Kuala Lumpur, Malaysia.
Tel: (G/L) (603) 2283 2266 Fax: (603) 2287 8868
Website: tantan.com

No. Lesen Pemaju: 1164-9/10-2016/01062 • Tempoh Sahlaku: 21/10/2014 - 20/10/2016 • No. Permit Pengiklanan & Jualan: 1164-9/10-2016/01062 • Tempoh Sahlaku: 21/10/2014 - 20/10/2016 • Nama Pemajuan Perumahan: Residensi Damai • Tarikh Jangka Siap: Dis 2017 • Jumlah Unit: 31 unit • Pelan Bangunan Diluluskan Oleh: Dewan Bandaraya Kuala Lumpur BPU30SC 20140419 • Beban Tanah: Malayan Banking Berhad (3813-K) • Pegangan Tanah: Kekal • Jenis A-30 unit (Harga Minima: RM2,167,000 - Harga Maxima: RM2,479,000) • Jenis B-1 unit (Harga: RM4,512,000)