

Completely curated. Careful selecting, refining and tailoring of materials, fittings, living spaces, amenities and beautiful environments to create a more desirable home and a better style of living in a manner that really matters.
Stonor 3 is the first luxury curated home in the heart of the city.

A joint venture between Tan Et Tan Developments and its Japanese counterpart, Mitsubishi Jisho Residence, this 41-storey Green Building will appeal to local and overseas investors, and home seekers who desire the appeal of cosmopolitan living in KLCC, Kuala Lumpur's equivalent of London's Hyde Park and New York's Central Park.





01 From the rich sprawling Burmese hardwood, to iconic French-fitted kitchen appliances and decadent Japanese sanitary ware, indulge in the exquisite artisanal quality of these homes.

Solid Burmese Teak floors inlaid throughout the home evoke an immediate sense of elegance and charm. Living room space opens up to evenly created dimensions. High ceilings impart a heightened sense of expanse. Minimal two large panel sliding doors framed by sturdy aluminum allows a sweeping vista of the outdoors.

02 The entrance is braced by a specially fitted solid panel designer door embedded with the renowned Kawajun lock set to balance both aesthetic harmony and security.

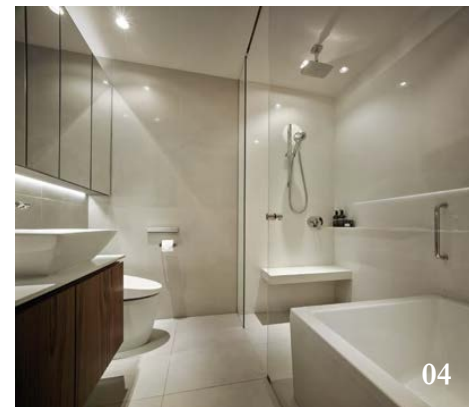




03 In the bedroom, windows stretching tall and wide elicit an immediate space while providing a full view of the lush exteriors. The teak floors continue to maintain a meticulous flow from one room to another.

04 Prevailing Japanese influence makes a statement in the bathrooms. The Toto Neorest is the definition of bathroom luxury. Compact, sturdy whilst capable of hands free auto-flush, equipped with motion sensors as well as water and energy saving modes, it promises to provide a comfortably pleasant experience.

Luxuriate in the semi-sunken bath replete with a bench seat, cleverly designed to conserve space and water consumption. Thoughtfully placed ledges allocate ample utility space in the shower.



Curated pieces of German faucets and shower fittings seamlessly blend while providing ease of use.

More space-saving allowances with storage available above and below. Cabinet mirrors slide out diagonally creating multi-angled reflections while allowing access to the shelves at the same time.

05 Return to the kitchen where, without compromising form over function, it is fitted with De Dietrich's avant garde appliances. The combi-steam oven, induction hob and downdraft hood blend right into this sleek and utilitarian layout.

The extended quartz counter top astutely conceals further storage space below on both sides, incorporating also a washer/dryer. Wood laminates add an interesting layer of texture to the modern minimalist look.

Stonor 3 is a testament of a thoughtful and elevated living orchestration. This conveniently sequestered enclave is sure to provide an immersive and rewarding experience for those who value beauty in sophisticated simplicity.