

SPACE. REIMAGINED.

The Capsule consists of four residential units located on the ground floor of Three28 Tun Razak condominium in Kuala Lumpur. The project department was tasked to increase living space and make it a comfortable home for two. It was an exciting journey!

The team listed the obstacles and constraints, some of which includes comments like the small parcel size, noise pollution and just not appealing. Nevertheless, there was a window of opportunity in the 5-meter high ceiling to maximise space vertically. The Capsule was conceived!

The focus was to encapsulate an all-in-one living, working, dining and playing lifestyle. Carving the space with this in mind, the project department took to task the challenge and after more than 6 months of labour, space was reimagined and The Capsule was born with an estimated 50% increase in living area from 300 sq. ft. to 500 sq. ft.!

The main door is secured with a smart digital lockset with passcode access for additional security. As you enter, the cosy living room greets you with a three-seater sofa bed and a wall hung 50" television. A lavatory is located on your right for the convenience of guests. Meals can be prepared in the fully fitted and fully functional kitchen. Notice the custom storage areas for bowls and crockeries. A 4-seater convertible dining or work table occupy the west side. A combi washer and dryer, air conditioning and a convertible fan with LED lights are included.

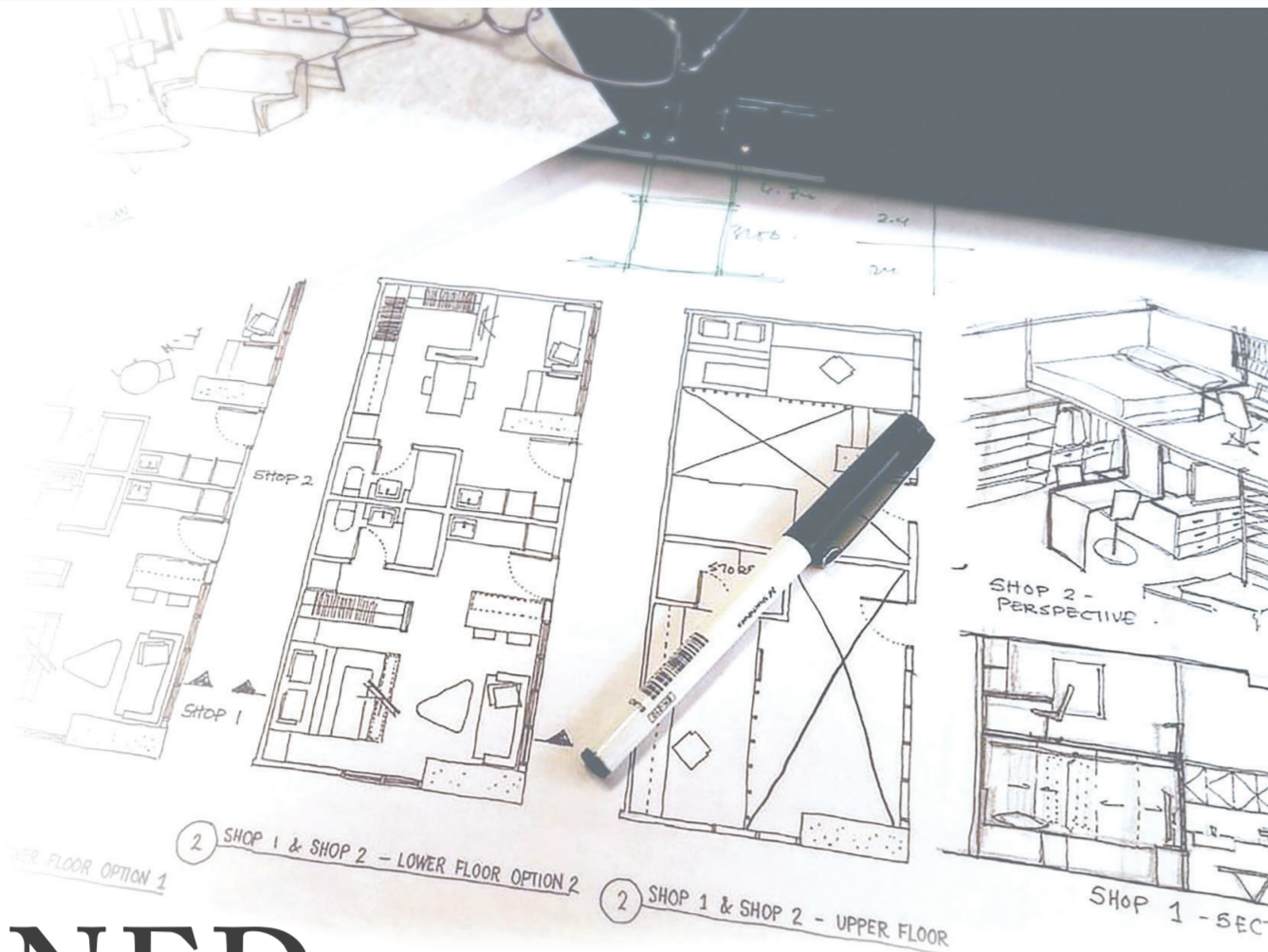
The staircase leading to the bedroom at the mezzanine floor is an interesting construction. Much thought was deliberated

making sure it does not encroach into the living space more than is needed. The end result was a staircase depicting a series of stagnant boxes giving an illusion of weightlessness, floating above the floor. Creative as it seems, the boxes also allow more storage and display space.

Enjoy a blissful sleep on the comfortable queen-sized bed. Reach out and more compartments and storage are within your reach underneath and beside the bed complimented by top hung cabinets. A modern 5-feet long glass wardrobe creates a sense of spaciousness. Refresh after a long day's work in the fully fitted en-suite bathroom that is functional and yet comes with a pinch of snob appeal. While every inch of space is utilized, the bedroom is made to look and feel spacious.

A home is not just about practicality and space but about how you feel and how it affects your mental state. The air-tight over-sized window draws in natural light while reducing noise pollution. Zebra blinds offer privacy and yet preserving the aesthetic design. An open ceiling design was adopted to maintain ceiling height but is painted black to camouflage the electrical conduit.

The Capsule comes with shared facilities in the main building. Get your heartbeat pumping when you hit the floating gym or take a dip in the swimming pool. It is a perfect marriage of living and work. Strategically located beside Kuala Lumpur's main arterial road on Jalan Tun Razak and just 2 km from the Petronas Twin Towers.



LAYOUT FEATURES

LIVING/WORK

An adjustable table for work, dining or study and a comfortable convertible sofa bed for guest or to enjoy a favourite movie on a 50" LED TV. Guest can use the additional lavatory provided here.

KITCHEN

Fully fitted kitchen beautifully proportioned with cabinets, microwave, refrigerator, hob and hood, washing machine with dryer, and appliances.

BEDROOM

A generous queen size bed, modern glass wardrobe and private lavatory all superbly finished and positioned to maximize usage of space.

STORAGE

Generous storage space intelligently engineered in the nooks and cranny under the stairs, bedroom and living area.

MISCELLANEOUS

Decorative designer ceiling light that can be converted into a fan with retractable fan blades. All units are broadband ready and equipped with smart lock system.

From left to right

- Kitchen
- Living Room
- Bedroom

Visit tantan.com for more information or call the sales hotline at 03-2287 2266 for a personal tour.



LIFESTYLE. DISTINCTIVELY CURATED.

Stonor 3 is a carefully refined condominium tailoring its elements to enhance your lifestyle. Stonor 3, a Green Building with many elegant open-air spaces generously offering three levels of facilities extending your family's living space well beyond the four walls of your private home.

As you approach Stonor 3, you will be greeted by a luxurious lobby with an ultra-high ceiling of 5.5-metre complimented by garden pavilions.

The chic sports and leisure facilities with family-friendly spaces is located on the 7th floor. Here you will find the Sky Deck pool and what we would like to call the floating gym over part of the swimming pool.

The massive rooftop space has been dedicated to large versatile function rooms, barbeque facilities and a garden walk path. Hidden within this garden are more private scattered spaces for meditation and personal exercise.

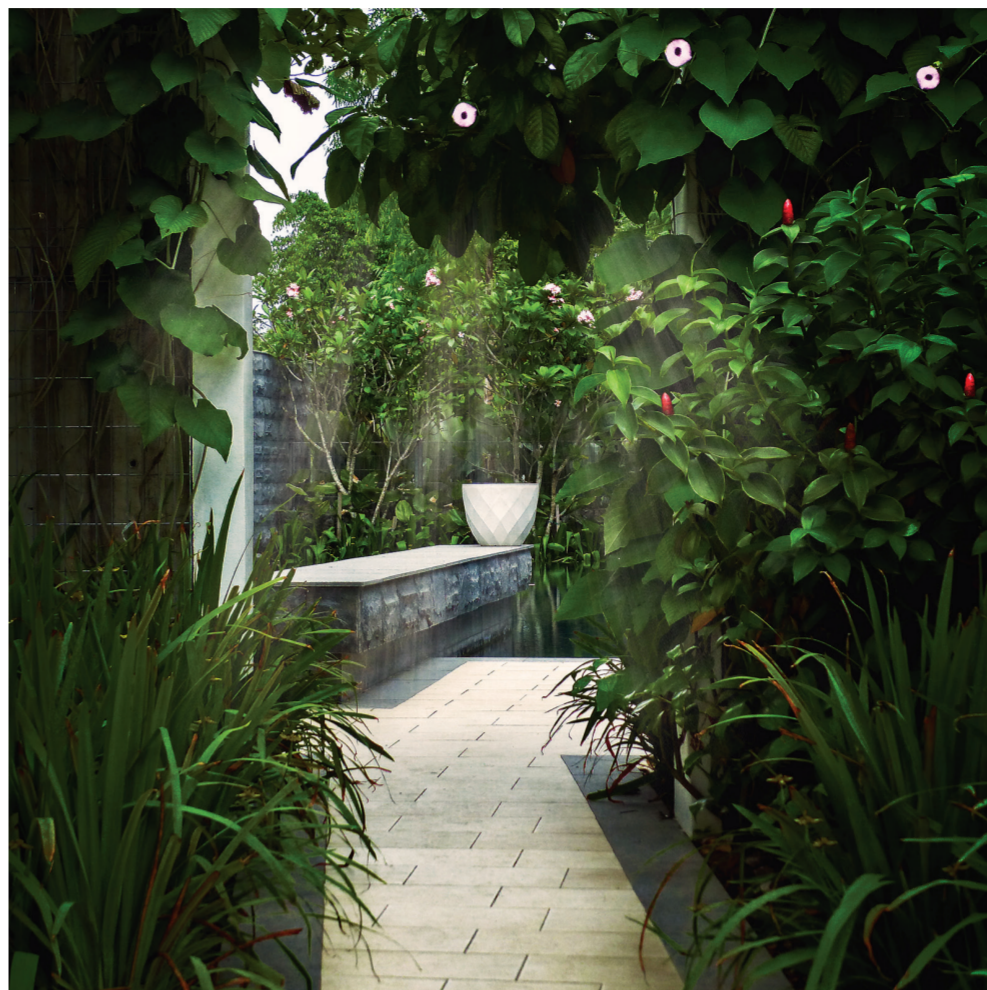
Clockwise

- The sprawling lobby is bold, exuberant and majestic reflecting sheer spaciousness
- The cabana and feature wall panelling on the 7th floor facility area
- The floating gymnasium located on the 7th floor
- Barbeque area located on the top floor
- Swimming pool area





Happiness is a rope swing



► A little pit-stop to take in the positive ions from the plants



► A cozy communal spot at the gazebo

LIVING SPACES. CRAFTED.

If there's one thing to be said about the exquisite family homes at Park Manor, is that they present you the luxury of space and the endless possibilities to craft your living experience. While there's ample space for children to roam and discover nature outside, there's also plenty of opportunities for family gatherings and leisure, all in a close-knit community.

The gazebo, one of the many communal spots that we like to call the heartbeat of the community is located within lush greeneries and connected by the walking path that is the life-line of this small "village". Meet familiar friendly faces and catch up with each other.

George Moore once said, "A man travels the world over in search of what he needs, and returns home to find it." Indeed, the home is where the heart is. A place for personal rejuvenation and to recharge with loved ones. Park Manor homes are built for the family

encompassing not just the four walls of your home but shared spaces that extends outside with only 41 families. This living space is crafted to provide you a canvas for a fulfilling family life.

Children laughing, running and cycling along lush green lawns as you take leisurely walks with loved ones, and that includes your beloved extended "furry" family members. Through lush meandering walking path, this is the life at Park Manor.

Take a dip in the resort-styled lap pool on a hot day or just relax with a cup of your favorite beverage in the clubhouse while watching your children play in the children's pool and playground.

If this lifestyle is what you aspire for, give us a call and we will take you on a personal tour in Park Manor. Seeing is believing.



► A daily sight of children laughing and playing

PARK MANOR
SIERRAMAS

DEVELOPMENT
ADDRESS
LAND TENURE / TITLE
BUILT-UP
FACILITIES

SALES HOTLINE
WEBSITE

Landed 3-Storey Strata Villas
Park Manor, Sierramas, Sungai Buloh
Freehold / Residential
5,470 sq ft - 6,980 sq ft
24-Hour Security Station, Residents Only Clubhouse, Lap Pool, Children Pool,
Children Playground, Meandering Walk Paths, Linear Parks
03-2287 2266
tantan.com